



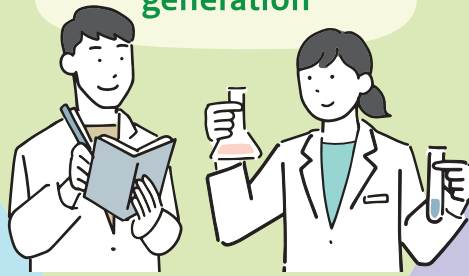
東北大学

BE YOURSELF! Live as Who You Are

Center for Diversity, Equity, and Inclusion (DEI Center)

The Tohoku University Center for Diversity, Equity, and Inclusion aims to level the playing field to further promote a fair workplace and discrimination-free environment. We strive to create an inclusive environment where people can learn, work, and live authentically. The center is open to those at Tohoku University, so please come and visit us.

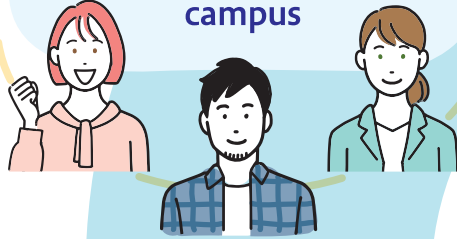
Nurturing the next generation



Building an inclusive environment



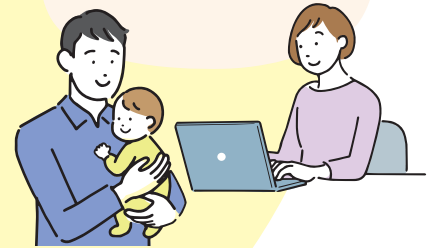
Creating an LGBTQ+ friendly campus



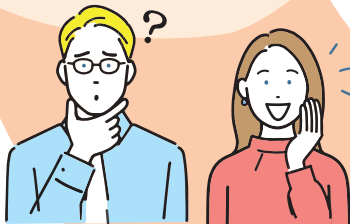
Aim to be a university where everyone can do their best!

DEI
Diversity, Equity, & Inclusion

Supporting work-life balance



Helping foreigners live with peace of mind



Reducing gender-based discrimination by addressing unconscious bias



WEB



Please go to our website for more information via the QR code.



Tohoku University DEI Center (Katahira Campus, Extended Education & Research Building 1F)

2-1-1 Katahira, Aoba-ku, Sendai, Miyagi 980-8576 Japan

TEL 022-217-6092

E-MAIL dei-center@grp.tohoku.ac.jp

WEB <https://dei.tohoku.ac.jp>

'Open Doors' - Engaged in Diversity for more than 110 years

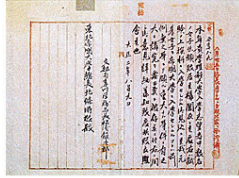
Did you know that Tohoku University was the first imperial university in Japan to admit female students? During the late Meiji Era, around the time of Tohoku University's establishment, universities only admitted male graduates from the old high school system and it was unthinkable for women to gain admission as university students.

The Ministry of Education (currently known as MEXT) even sent a letter demanding an explanation through official channels. However, the university paid no heed and announced the acceptance of Chika Kuroda, Raku Makita, and Ume Tange, thus admitting the first female university students.

The first female university students



Chika Kuroda Raku Makita Ume Tange



The Ministry of Education's letter to Tohoku University

In the 110 years since their acceptance, Tohoku University's unwavering 'Open Doors' policy has welcomed talented students, regardless of gender, ethnicity, nationality, or economic background.

On April 5, 2022, the university unveiled the 'Tohoku University Diversity, Equity, and Inclusion (DEI) Promotion Declaration,' renewing its commitment to building an environment - on campus, in the community and around the world - where all voices are heard and respected.

Tohoku University's Designated Site

Check out our page on 'Women of Tohoku University: The first female students at an imperial university'. (Japanese only)

https://www.tohoku.ac.jp/tohokuuni_women/



'Science Ambassadors' opening the door for future generations

The Science Ambassadors program, formerly known as the Science Angels program, is a cornerstone of Tohoku University's on-going efforts to promote diversity, inclusion, and the role of women in science and technology.

Members serve as a support network for each other and as role models for children, especially young, school-age girls. Science Ambassadors regularly give talks and host events to encourage a love of science among young students. They also organize science seminars at high schools and participate in science events, as well as Tohoku University's

open campus, symposia, and other related activities.

Now, SA has students who major in humanities and self-identify as female and non-binary. As SA becomes more diverse, it provides even more influential role models for the next generation.



BE YOURSELF! Live as Who You Are

We Support "Live as Who You Are"

Tohoku University created its guidelines for gender and sexual diversity in March 2023.

For more information



Reducing Unconscious Bias

Everyone unconsciously develops biases in daily life. How can we reduce unconscious bias?

For more information



Correcting/Addressing Gender Imbalance

To increase the number of female researchers, the DEI Center provides support programs aimed at promoting work-life balance, including matters related to childbirth, childcare, and elderly care.

For more information



Enhancement of Parental Support

Tohoku University provides nursery care for employees and students with children.

For more information



The DEI Center's Library

We have more than 8000 books available related to gender studies and other DEI related topics that are available for check out.



DEI is for everyone

We support your DEI activities. If you want to be an ally or make a group, but don't know where to start, please contact us. We are here to help. All those at TU can submit their stories through the DEI Circle page on our website.



Support the DEI Promotion Fund!

Please consider donating to the Tohoku University DEI Promotion Fund to support the advancement of female researchers and emerging leaders, promote work-life balance measures for employees that double as caregivers, and assist in nurturing the next generation. For more information, visit our website via the QR code.

Contact: Tohoku University Fund Office

2-1-1 Katahira, Aoba-ku, Sendai, Miyagi 980-8576 Japan

TEL 022-217-5058 E-MAIL kikin@grp.tohoku.ac.jp WEB <https://www.bureau.tohoku.ac.jp/kikin/english/index.html>



DEI Mailing List

If you'd like to subscribe to our mailing list, please scan the QR code and register.



For detailed information on all of our initiatives and our center's upcoming activities, please visit our website and social media channels.



Center for
**Diversity,
Equity &
Inclusion**
TOHOKU UNIVERSITY

2-1-1 Katahira, Aoba-ku, Sendai, Miyagi 980-8576 Japan

TEL 022-217-6092 WEB <https://dei.tohoku.ac.jp>

WEB



FACEBOOK



X



E-MAIL dei-center@grp.tohoku.ac.jp

