

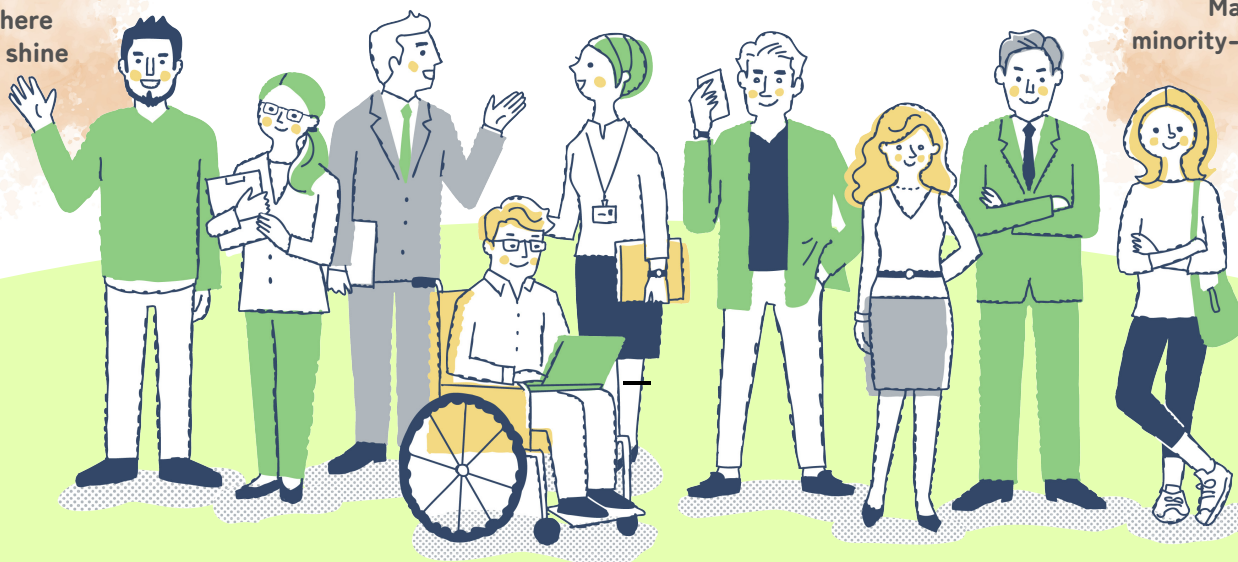
What DEI Means for Tohoku University

— Perspectives from Support Services and Students —

**Participating Support
Offices and Centers**

- Center for Counseling and Disability Services
- Global Learning Center
- Center for Career Support
- International Support Center
- Center for DEI

Aiming for a
university where
everyone can shine



Majority- and
minority-identified people.

March 7 (Fri), 2025 10:00~12:00

Hybrid Event Capacity: 30 attendees

Japanese only

2nd Floor, Espace, Katahira North Gate Hall, Tohoku University

Eligibility: Faculty, staff, students, and graduate students of Tohoku University

How to Register

Please register by Monday, March 3, using the registration form at the URL below or the QR link on the right.

▶ <https://forms.gle/3UMSTyywR7fj4qig7>



• Please use a PC email address when registering.

Note: Emails from mobile carriers (e.g., @softbank.ne.jp, @ezweb.ne.jp, @docomo.ne.jp) may not receive messages due to email settings.

Part 1 Report from Support Offices and Centers

1. Report on the 2024 International Student Life Survey (Global Learning Center)
 2. Report from the Center for Career Support
 3. Report from the International Support Center
 4. Report from the Center for Counseling and Disability Services
 5. Overview of the 2024 Large-Scale DEI Survey for Faculty & Staff (Center for DEI)
- Note: The order of reports may change.

Part 2 The Role and Future of Student Supporters (Allies)

- Insights from the GLC International Student Help Desk
- Insights from DEI Lounge student staff
- Discussion (open to all participants)



Organizer: Center for DEI

Co-organizer: Global Learning Center

